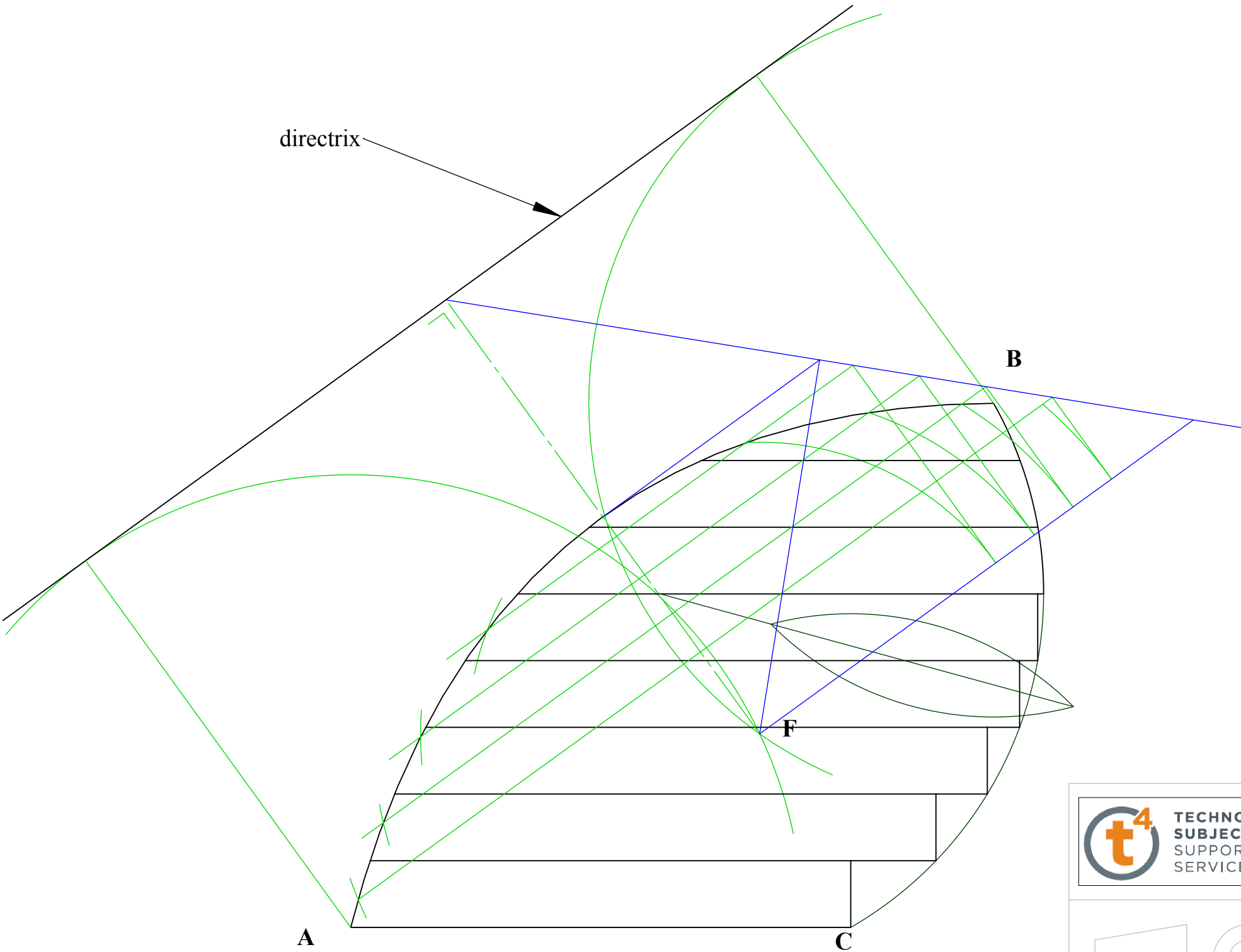




The **Norman Foster** designed **London City Hall**, known as "The Glass Egg", is a building that from the front looks like a boiled egg. Each level is offset slightly from the one below resulting in a slightly curving side and a rapidly curving side.

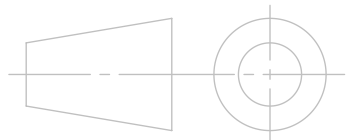
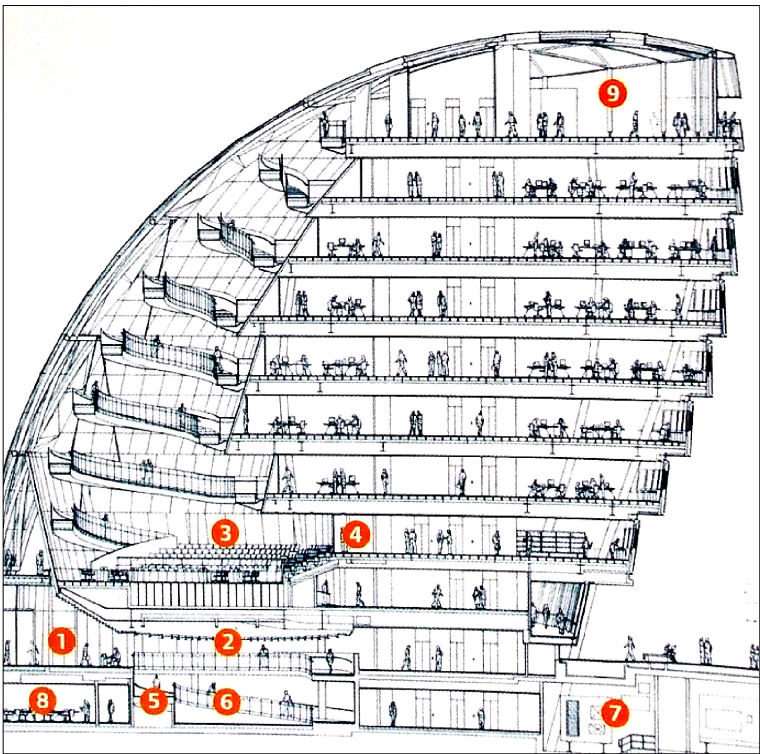
In the drawing below, A and B are points on the curve of a **parabola**. The **focus** F is 95mm from A and 85mm from B. The centre of the **circular arc** BC lies on the axis of the parabola.

- (a) Locate the **focus** F and determine the position of the **directrix** and the **axis**.
- (b) Complete the drawing of the London City Hall.



Key Principles:

- A and B are the same distance from F as they are from the Directrix
- The axis is drawn Perpendicular to the directrix.
- The vertex lies midway between the focus and the Directrix
- The eccentricity of a parabola is always 1



DESIGN & COMMUNICATION GRAPHICS

TITLE: **CONIC SECTIONS 9**

DRAWN BY:	SIZE A3	UNLESS OTHERWISE SPECIFIED ALL DIMENSIONS ARE IN mm
SCALE: 1:1	DATE: 26/01/2009	SHEET 1 OF 1