

A Guideline to using Pic Locator

Correct communication between the PC and Pic Board.

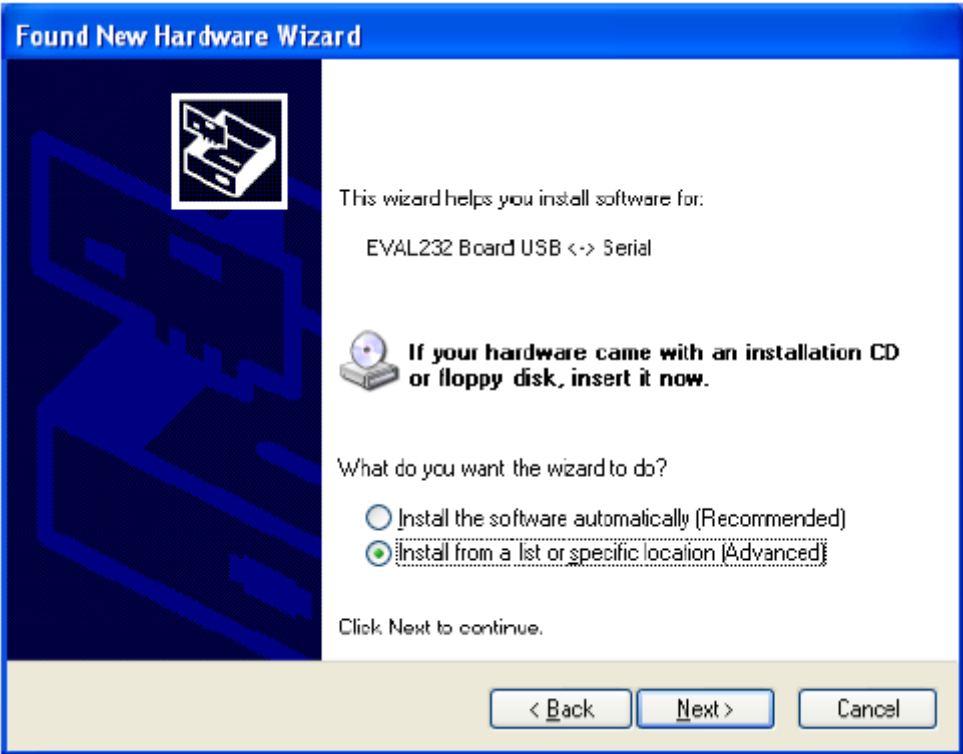
When a laptop or PC is connected to Picaxe for the first time it is necessary to install the driver software that allows the computer see the Pic board. This is standard practice, similar to setting up a new printer or other external hardware. There are some steps that should be followed to ensure trouble free operation.

Firstly the driver software for the Picaxe cable comes on a separate folder that can be obtained from the PIC Logicator CD or from the t4 website.

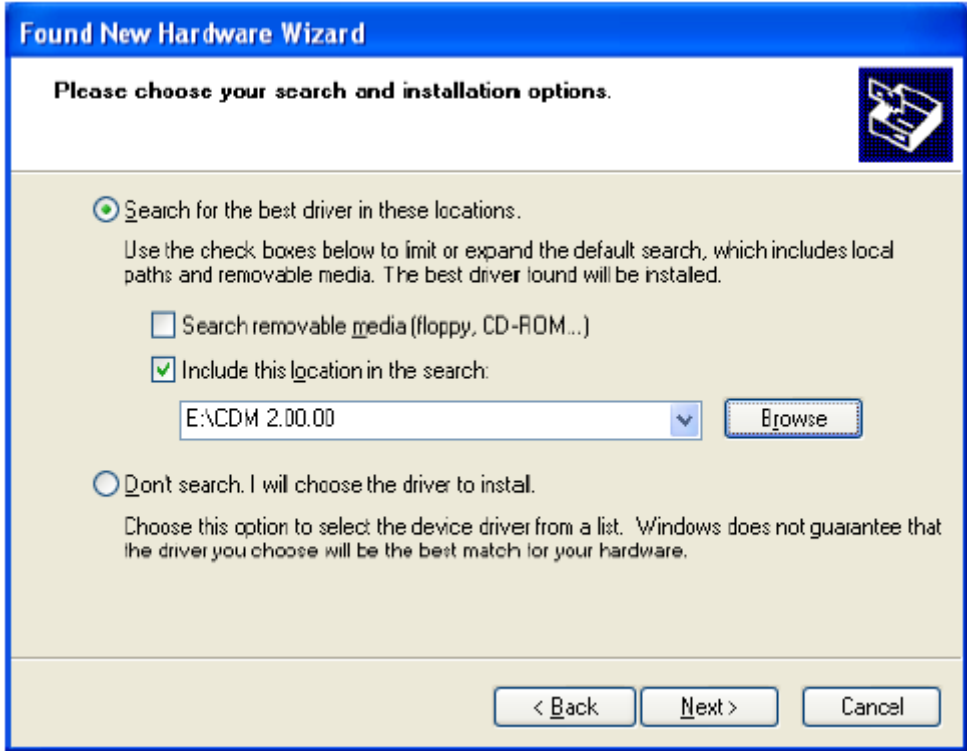
When the cable is plugged in follow the onscreen guide.



Click the “Not this time” box and select next



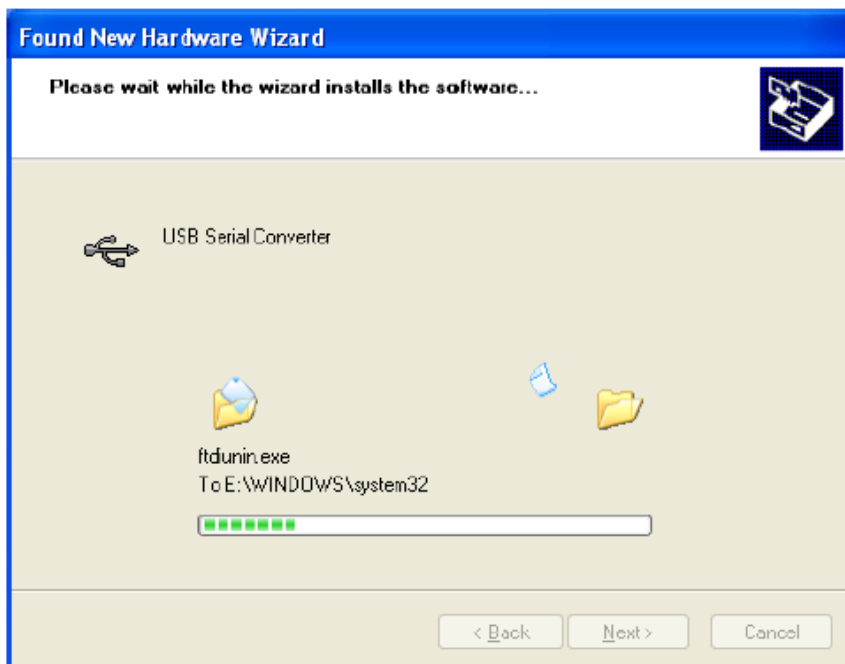
In this box, select installation from a specific location and select next



In this box check the box as shown and then press the browse to find where the driver software for the USB cable is located, select and press next. If the command box below appears click the Continue Anyway button



The following screen will appear followed by the finish screen, select 'Finish'.



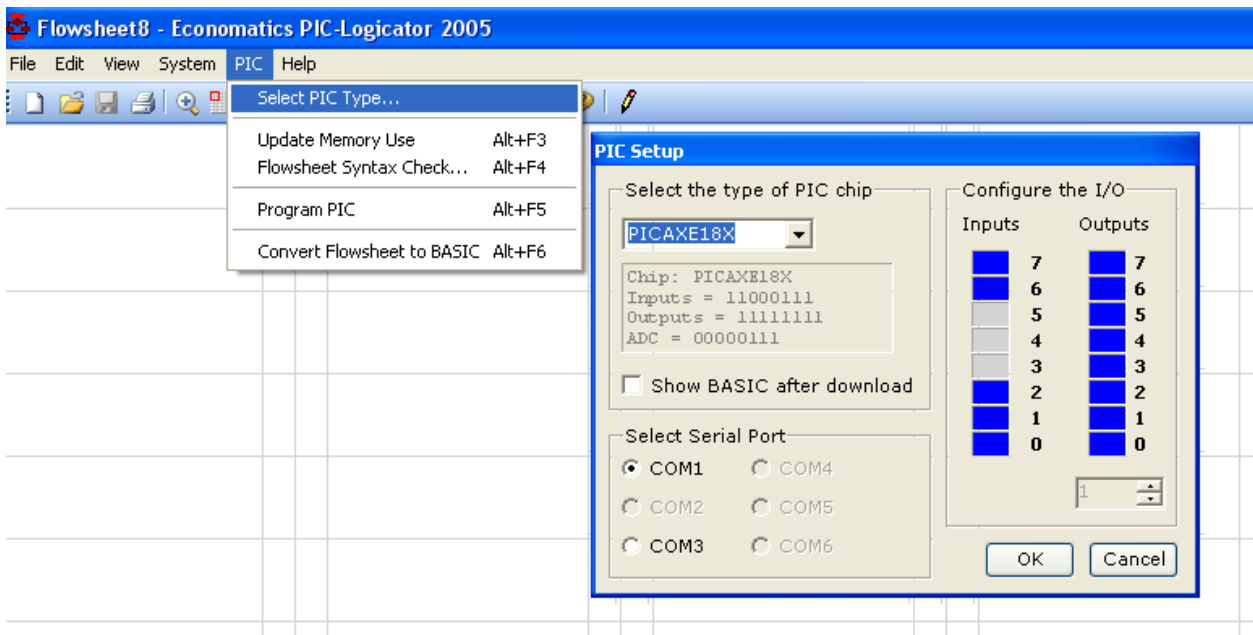


This process has just finished installing USB serial converter.

A few seconds after clicking on finish another Found New Hardware Box will appear, do not cancel this.

This set up is to install a USB serial port. To install this, repeat the exact same process as before.

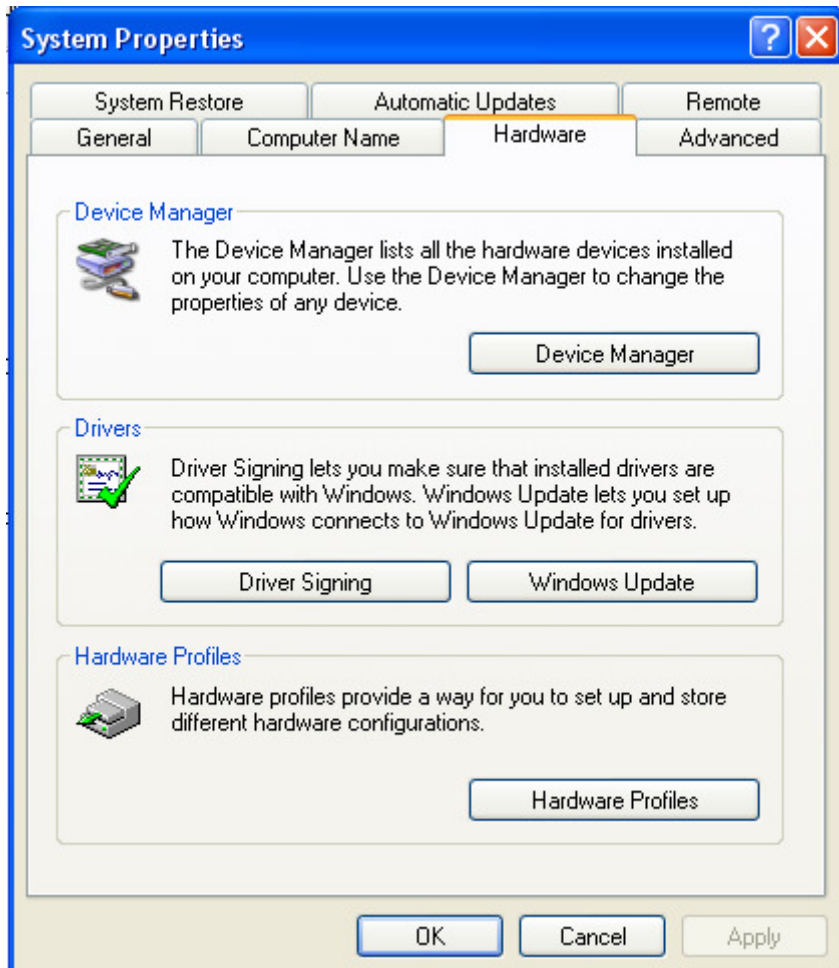
Once these two pieces of software have been installed it is necessary to make sure that Logicator is using the correct Com Port.



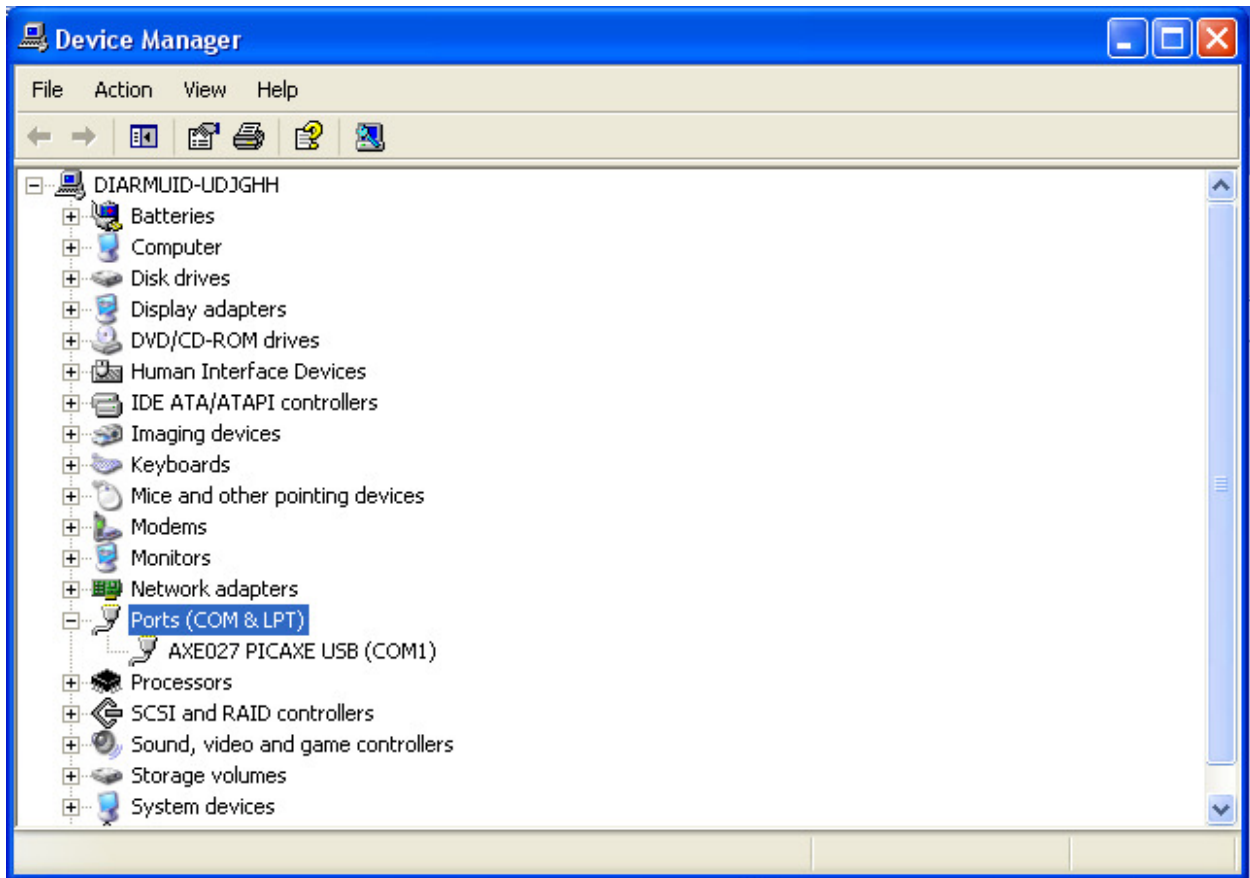
In Logicator there are six available com ports. Depending on your computer set up the software you just installed may not have been assigned to any of these six. If this is the case the user must manually select the com port by carrying out the following.

On your computer select **Start => Control Panel => System**

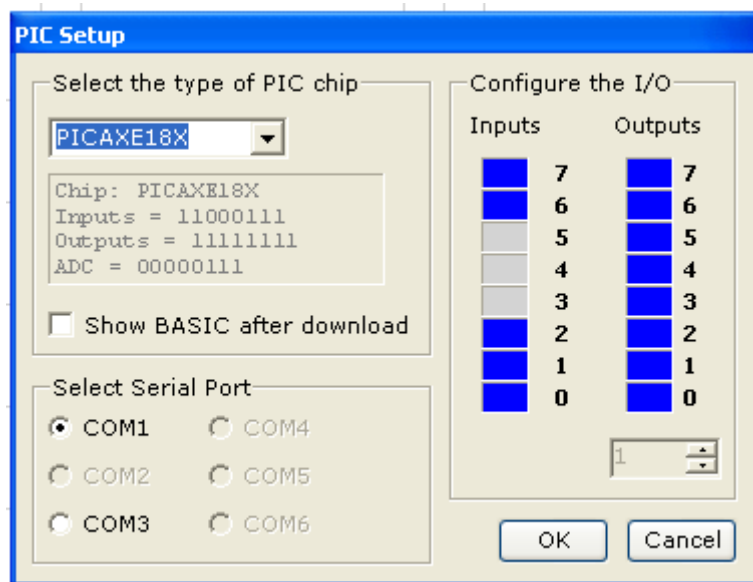
Your should now be at the following window



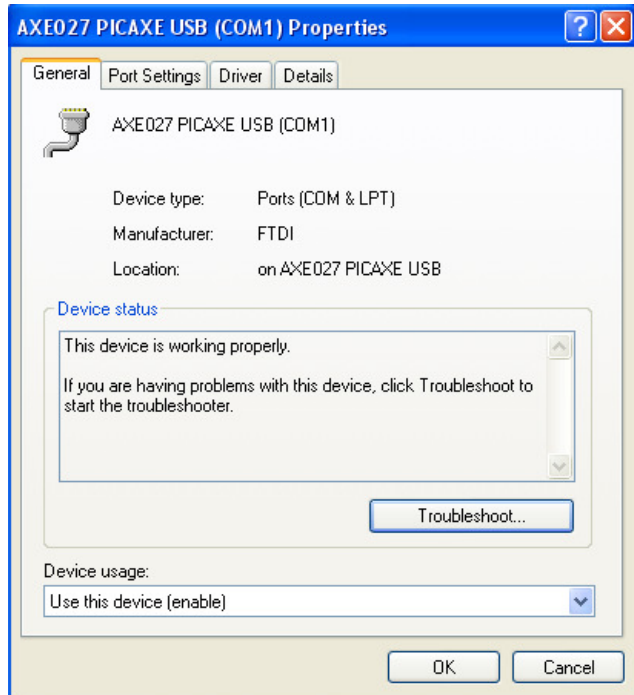
Select the **Hardware** tab, then click **Device Manager**



Click on the Ports(Com & LPT), this will show you what com the Picaxe cable has been assigned. If the com is between 1 and 6 simply return to Logicator and in the 'Pic set up box' tick the correct com.



If the com port number is higher than 6, there are a couple of more small steps to follow. In the Device Manager under Ports (Com & LPT) double click on Axe027 PICAXE and the following window will appear



Select the Port settings tab

