

For the attention of Design & Communication Graphics Teachers.

As part of the new DES Procurement Framework for the supply of new Computers & Software for DCG you will be receiving new Desktop/Notebook computers with the latest version of SolidWorks Educational Edition 2015/2016 pre-installed. This installation of SolidWorks has a generic Serial Number that you **must** change as soon as possible.

As an aid to completing the process we have included a set of work instruction for changing this serial number to your own unique school serial number.

Regards,

Solid Solutions.

Changing the SolidWorks Serial Number on an existing installation

1. On receipt of the new Computers purchased as part of the new DES Framework each school will have to change the serial number on the preinstalled SolidWorks Software to their own unique School serial number. This document outlines how to change the Serial Number of the installation of SolidWorks that comes pre-installed on these computers.

2. Locate your Schools current SolidWorks Serial Number.

3. If you do not know your school's serial number you can locate the Serial Number: On an existing School Computer, open SolidWorks, and under the "Help" drop-down menu, choose "About SolidWorks". (see Figure 1).

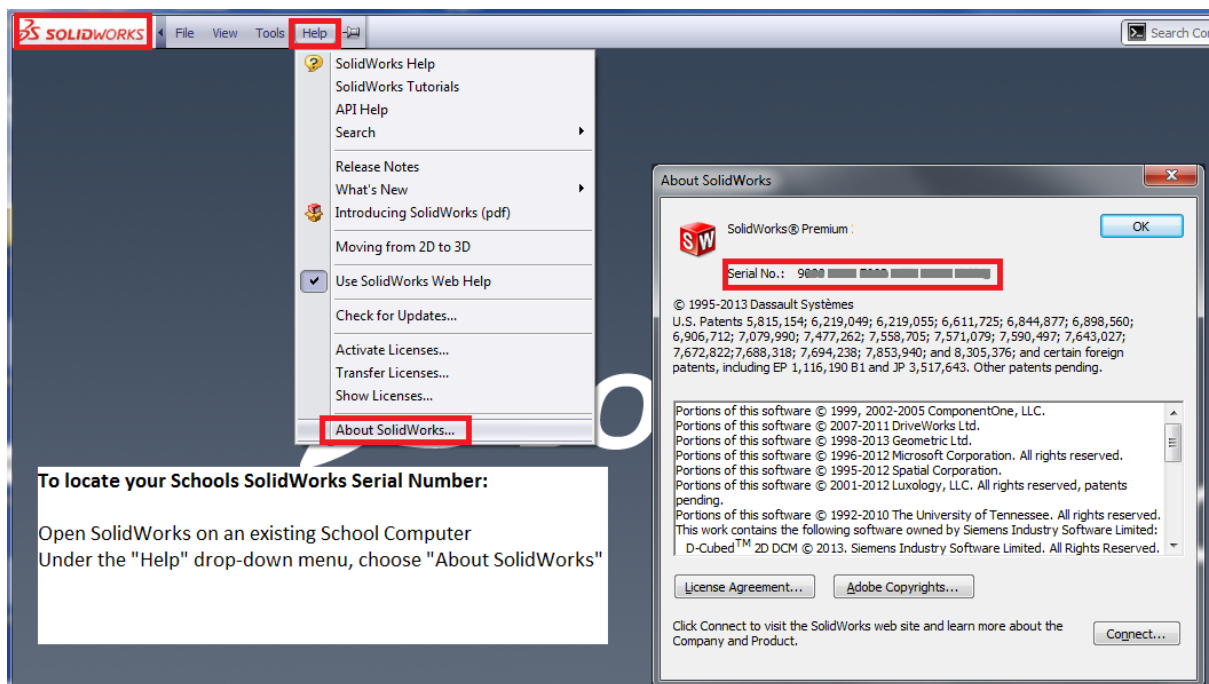


Figure 1 – Locate your School SolidWorks Serial Number from your existing School Computer

4. On your new computer that has the temporary installation of SolidWorks, make sure you are logged on with full Administrator Privileges. (This is likely to be the case with the initial settings on your new computer)

5. In the Windows START Menu, at the bottom left of your screen click on the Start button (Windows Icon) and in the search programs & files box, type **Programs**. Then from the search result, choose "Programs and Features" (See Figure 2 on page 3).

In "Programs and Features" scroll down to SOLIDWORKS 2015 x64 Edition SP02.1, right-click on the program and choose "Change". (See Figure 2).

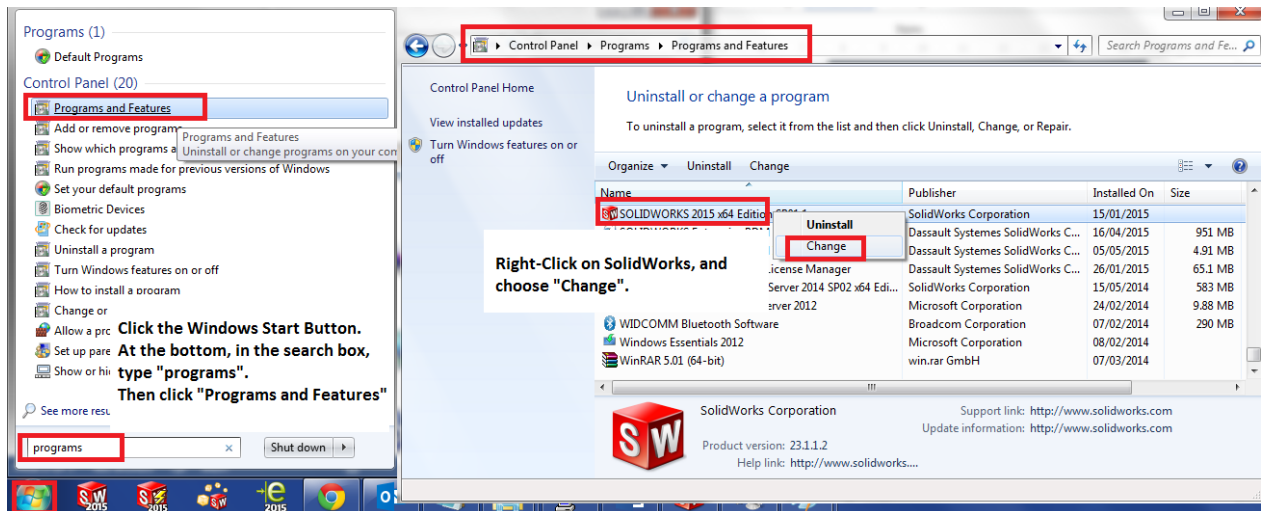


Figure 2 – In “Programs and Features”, locate SolidWorks, and choose “Change”.

6. The “SolidWorks Installation Manager” will now start. Choose “Modify the individual installation.” and click Next. (See Figure 3)

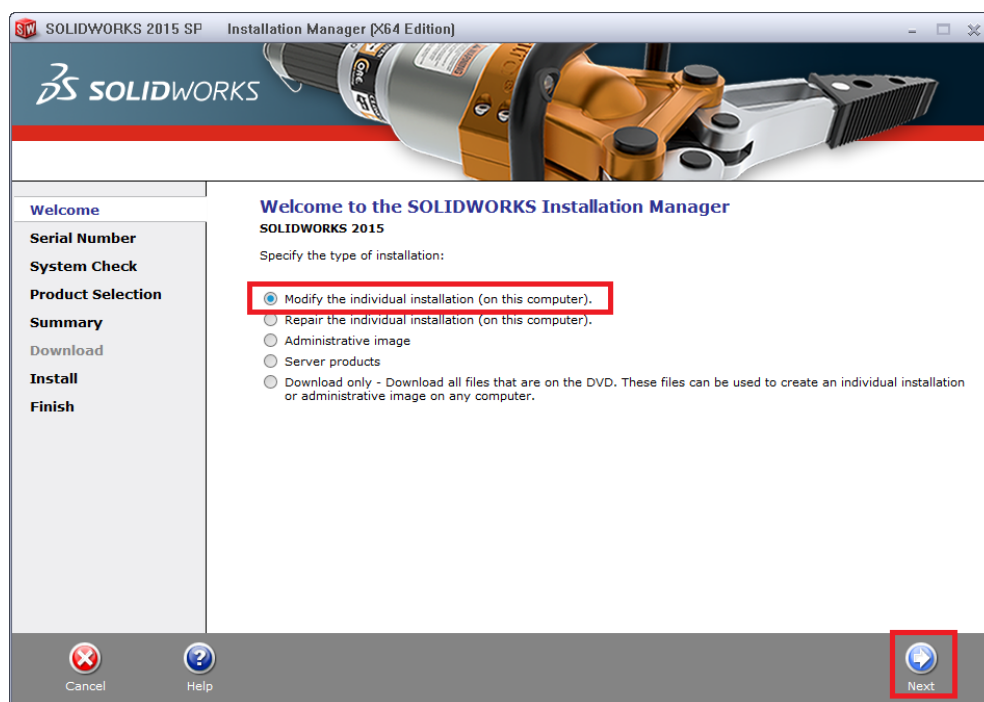
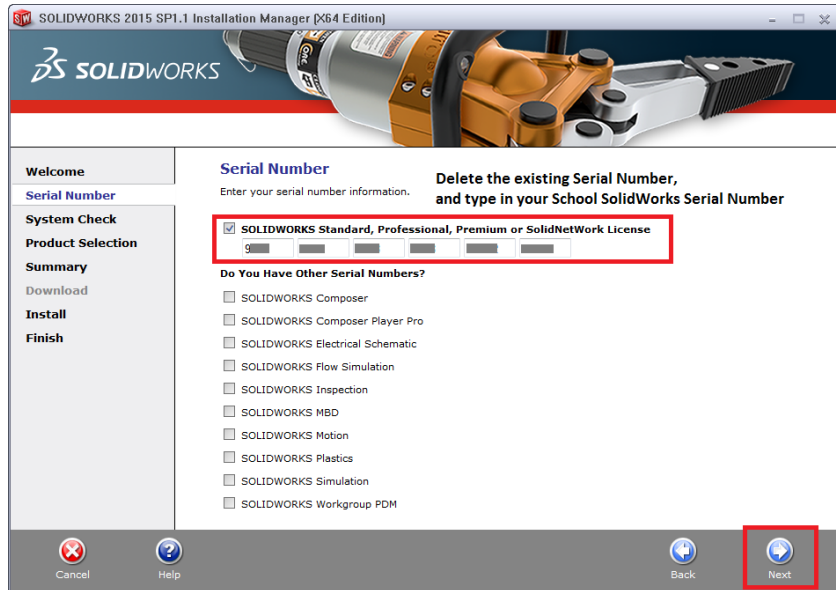


Figure 3 – Choose “Modify” and click Next.

7. Delete the current Serial Number, and enter your Schools own SolidWorks Serial Number (From Step 3 on Page 1 of this guide). Click Next. (See Figure 4).



8. You may receive the following warning (Fig 5). Click Yes to continue

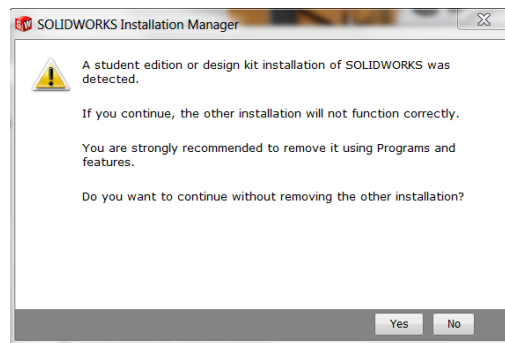


Figure 5 - Warning Message

9. On the Product Selection page, do not change any settings. Click Next to continue. (See Figure 6).

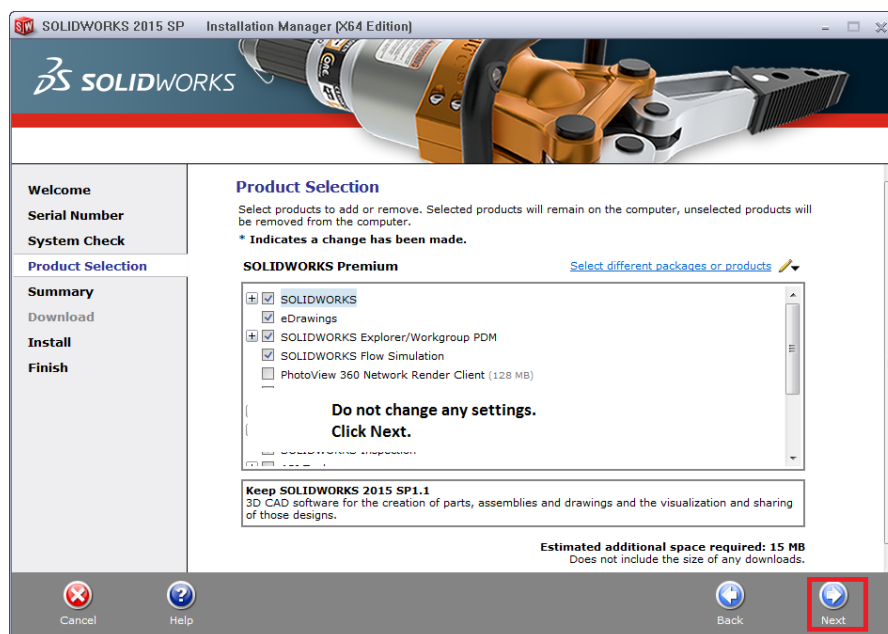


Figure 6 – Keep existing settings and Click Next.

10. On the Summary page, click “Modify Now”. (See Figure 7)

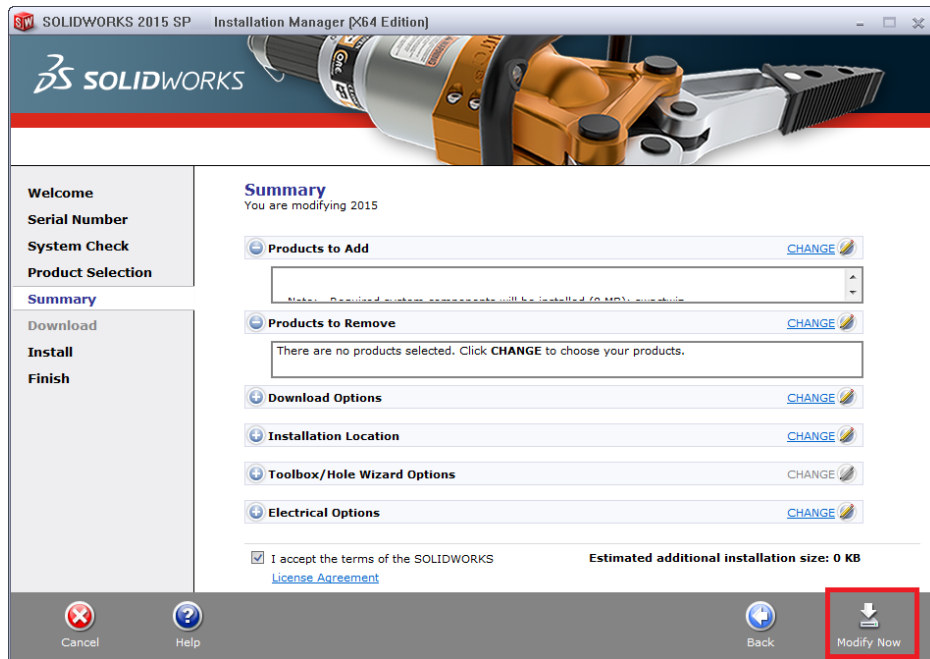


Figure 7 – Click Modify Now.

11. Installation Complete. Deselect the first selection box. Choose “Yes, I want to join. Click “Finish” to complete (See Figure 8).

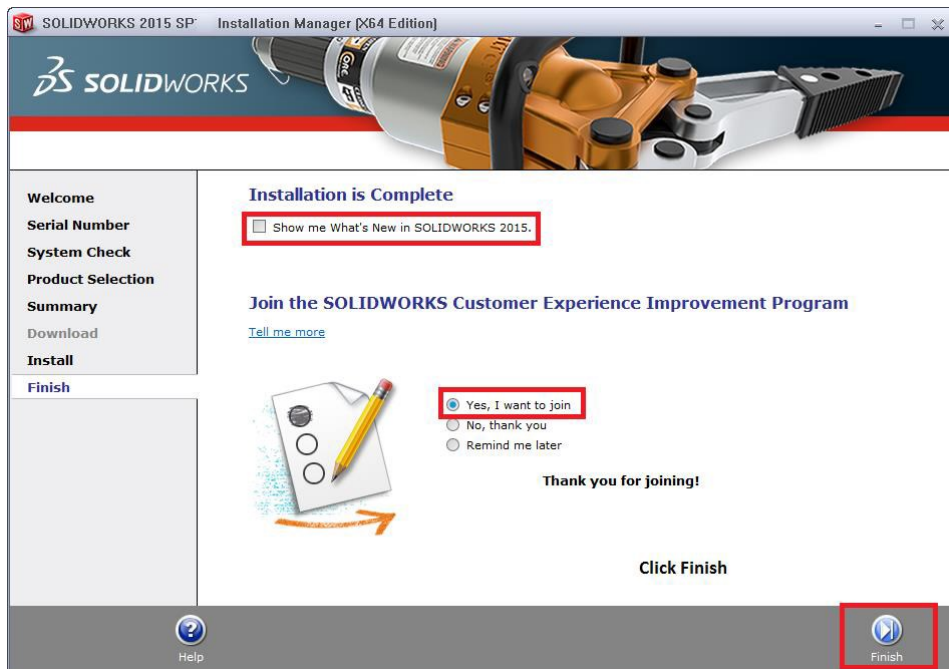


Figure 8 – Click Finish

12. Remain logged on with Administrator Privileges: On the Desktop, Double-left Click on the “SolidWorks 2015” icon (Figure 9) to start SolidWorks 2015



Figure 9 – Open SolidWorks 2015 after having changed the Installation to the School Serial Number

13. When SolidWorks opens for the first time with the Schools Serial Number, a “SolidWorks Product Activation” dialog will appear. Choose “I want to activate my SolidWorks Product now”. Click Next. (See Figure 10)

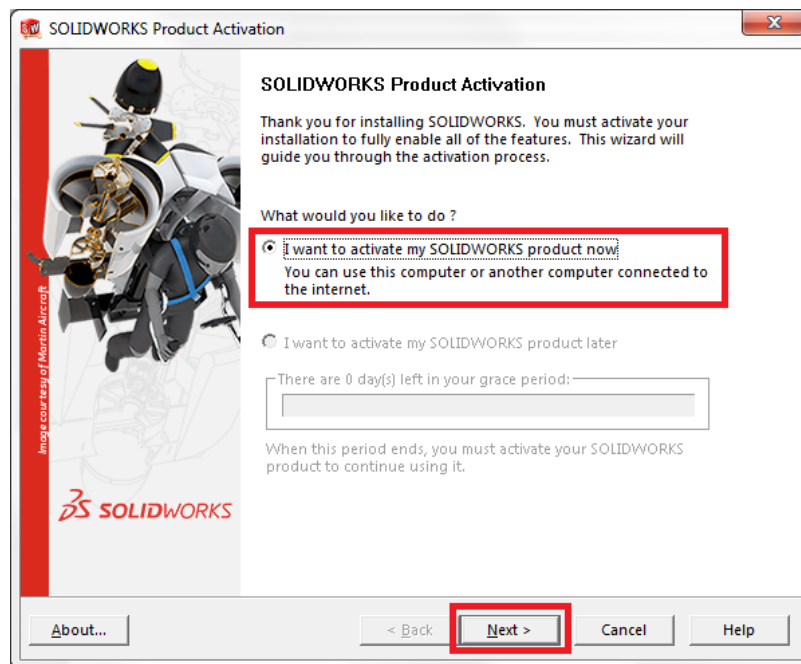


Figure 10 – The first time SolidWorks is opened with the Schools Serial Number, it will have to be activated.

14. Choose “Automatically over the Internet”. Enter your Email Address. Click Next. (See Figure 10).

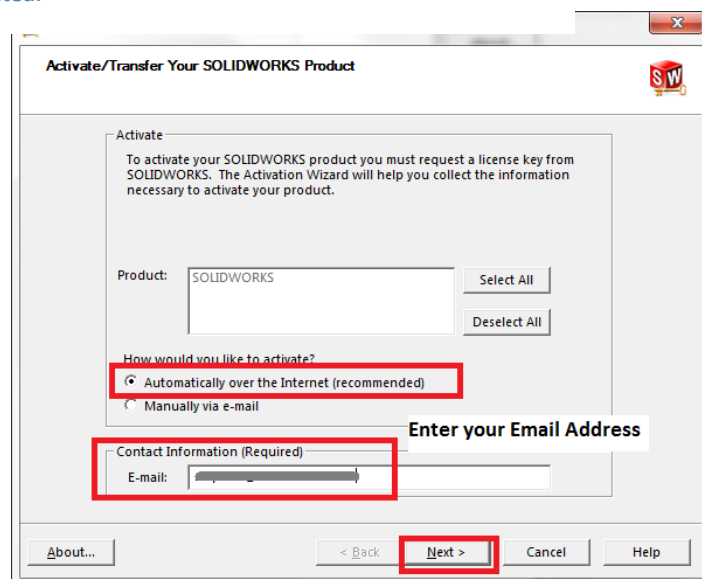


Figure 11 – Enter your Email Address and Click Next to Activate.

15. A dialogue box will appear to indicate that Activation has succeeded. Select 'Finish'. (See Figure 11). SolidWorks will now open fully.

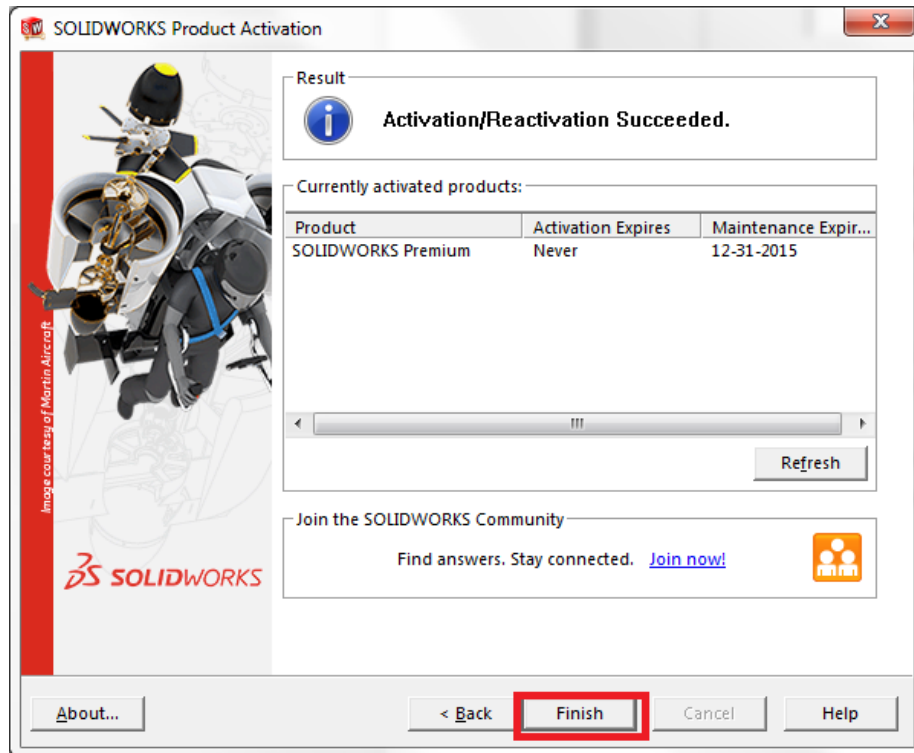


Figure 12 – Activation Succeeded. Click Finish.

SolidWorks is now correctly
activated using your Schools Serial Number
