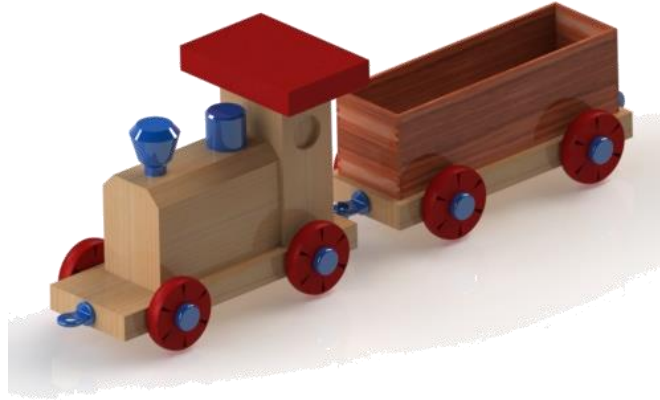


Train



Introduction

This lesson will focus on the creation of parts of the Train using the new **Auto Scale**, **Drag & Drop** and **Show & Hide**

Learning Intentions



This lesson will focus on the **R** Command (Recent Parts/Assemblies) **Scale Sketch**, **Drag/Drop** and **Auto Scale**

Prerequisite knowledge: To complete this exercise you should have a working knowledge of SolidWorks 2009 and a previous knowledge of the following commands are required in this lesson: **Sketching Extruded Boss/Base**, **Extrude Cut**, **Fillet**, and **Adding Appearances**. **File management**.

Creating the Parts

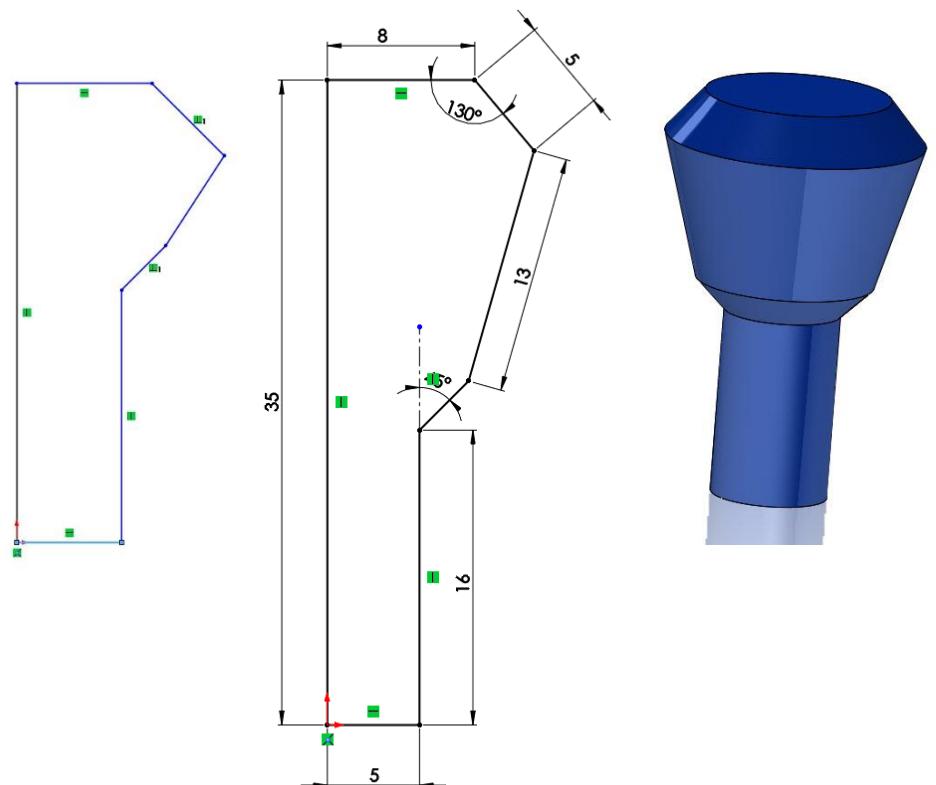
Creating Parts

The Train Engine has ten parts we will go through the process of creating the parts with particular reference to some new options available. The name of the parts are as follows Body, Cabin, Cabin Top, Dowel, Funnel Front, Funnel Back Hook, Ring and Wheel.

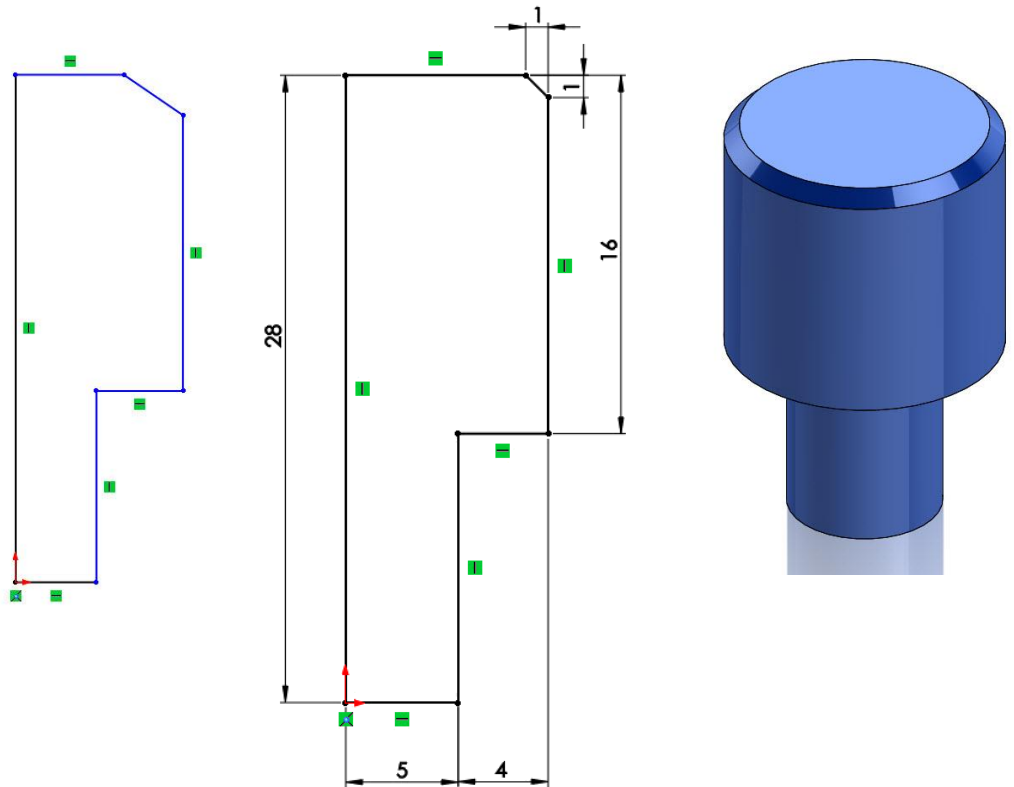
Funnel Front



Create a sketch of the funnel and apply the dimensions. **Note:** When you apply the dimension the sketch will **Auto Scale**. Select **Revolve**

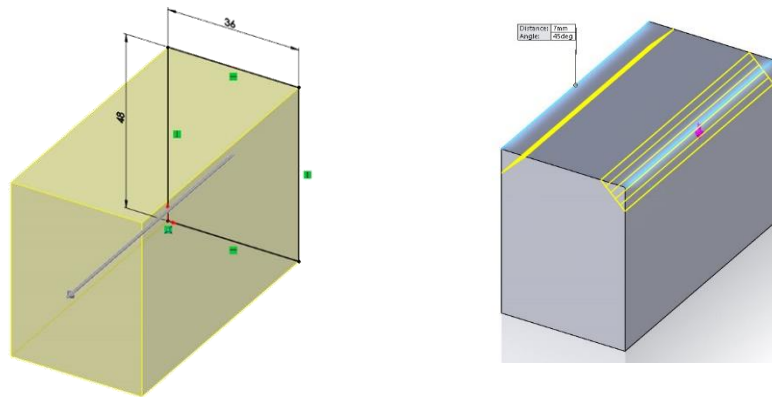


Funnel Back

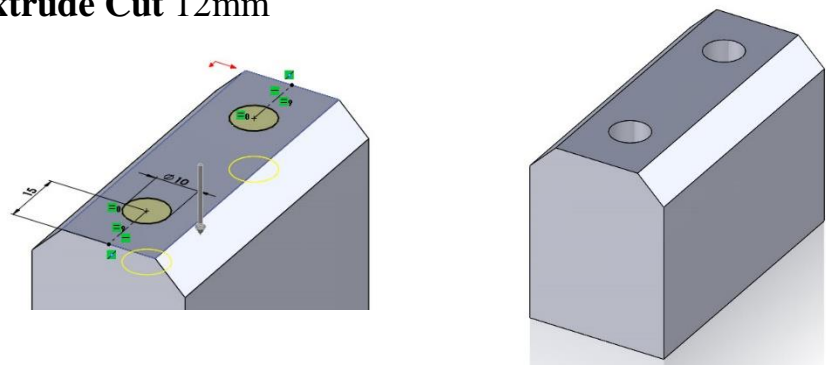


Body

Create a rectangle 36mm by 48mm, **Extrude** 72 mm and **Chamfer** 7mm

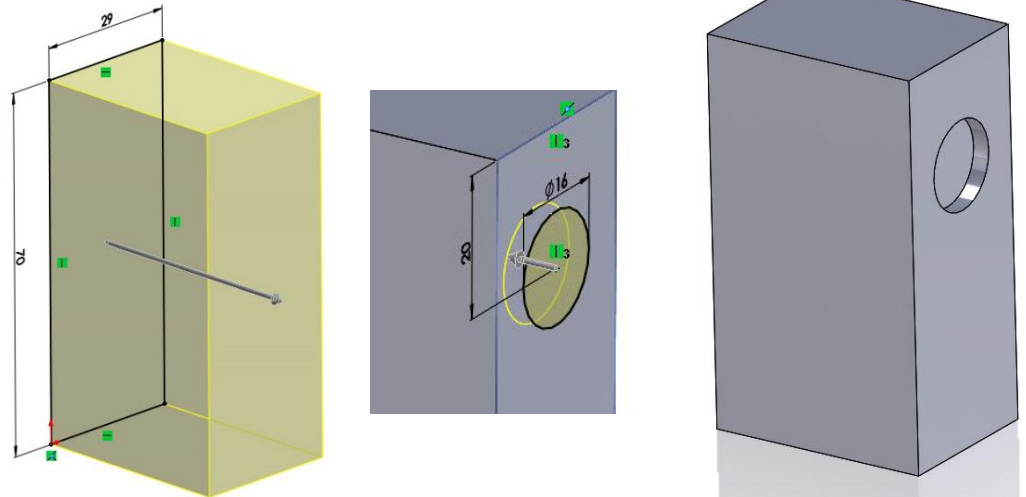


Sketch Circle Dia. 10 mm on the top surface and **Extrude Cut** 12mm



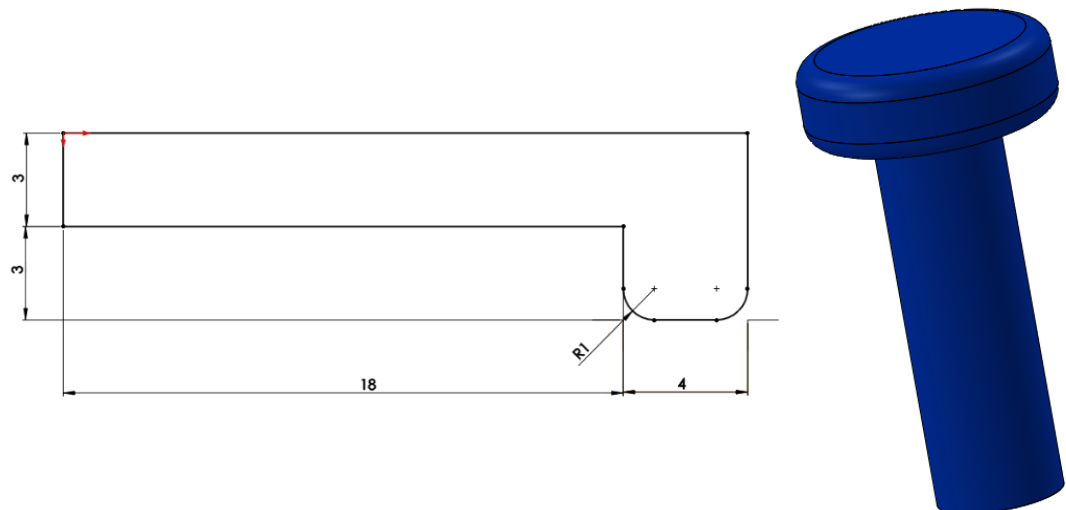
Cabin

Create a rectangle 29mm 70mm and **Extrude** 40mm
Sketch a circle Dia.10 and **Extrude Cut** 3mm repeat on opposite side.



Dowel

Create a **Sketch** and **Revolve**.



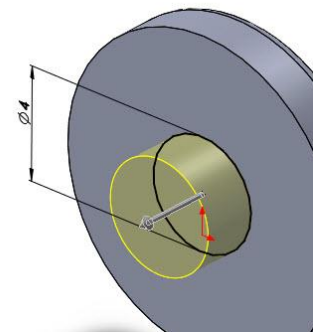
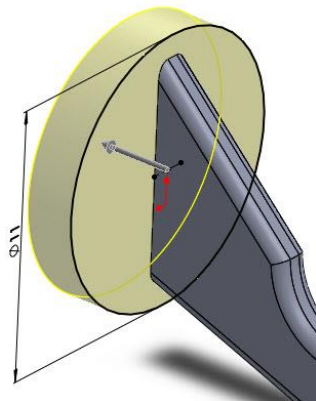
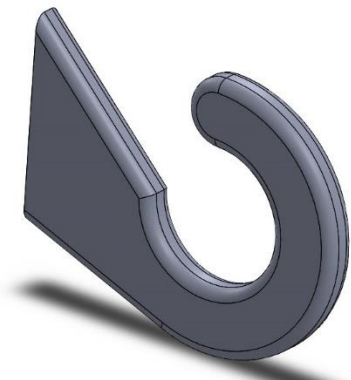
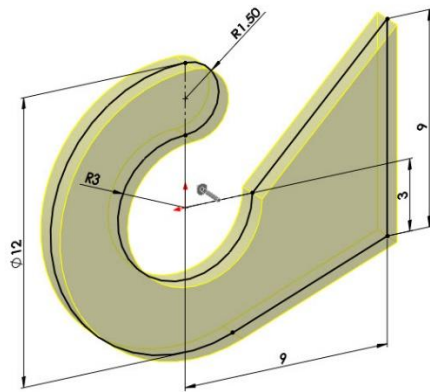
Hook

Create the **Sketch** and **Extrude, Mid Plane 1.5mm.**

Fillet edges .5mm. Create a circle on the back surface

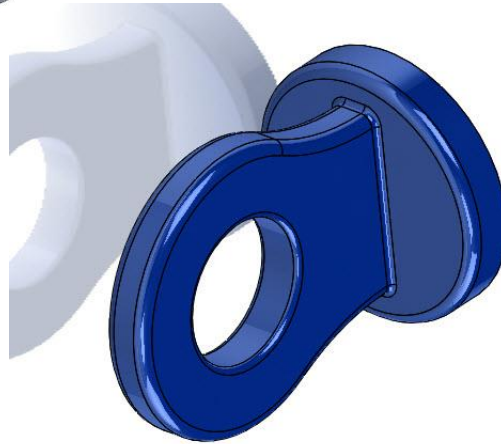
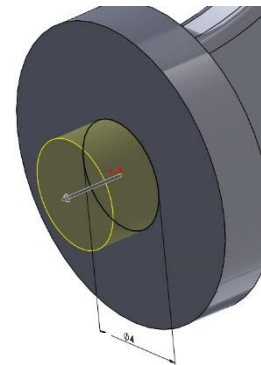
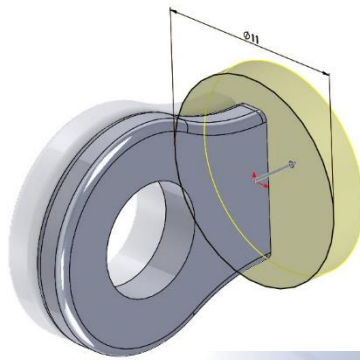
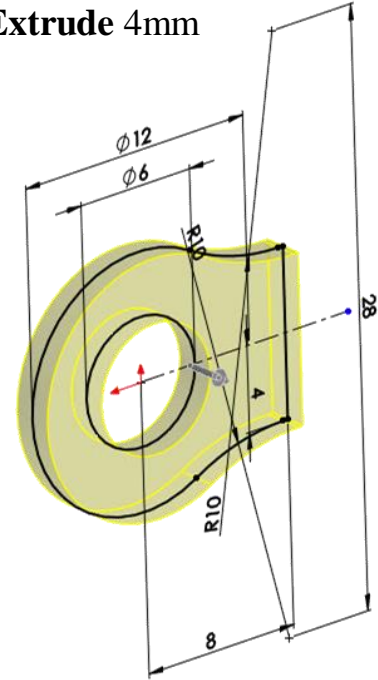
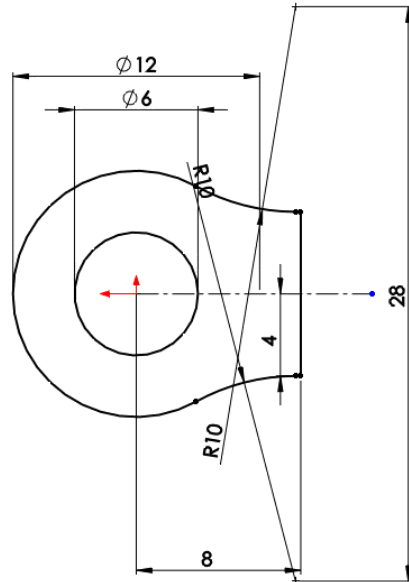
Dia. 11mm. **Extrude 2mm.** Create another circle Dia.

4mm and **Extrude 4mm.**



Ring

Create the sketch to the dimensions given and **Extrude** mid plane 1.5 mm. **Fillets** .5mm, Create a circle on the back 11mm and **Extrude** 2mm. Create another circle Dia. 4mm and **Extrude** 4mm

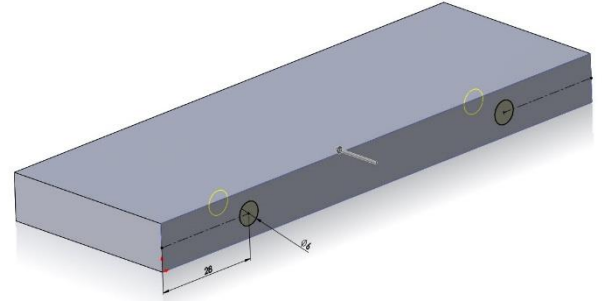
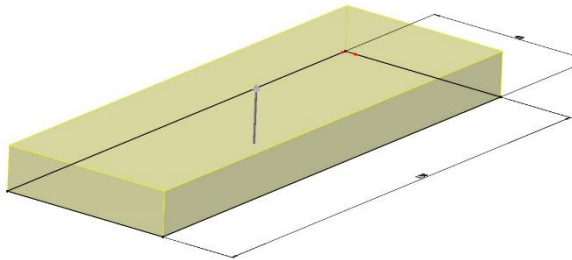


Base

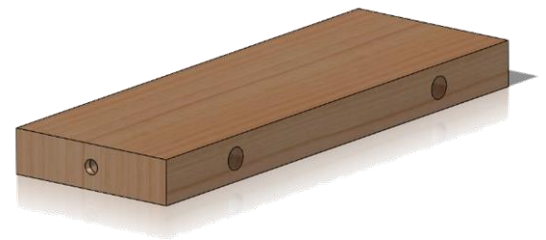
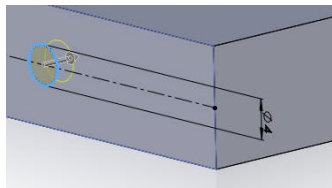
Draw the base 128mm by 48mm and **Extrude** 12mm.

Sketch the holes in the position shown and **Extrude**

10 mm



Sketch a circle 4mm Dia. and **Extrude** 2mm

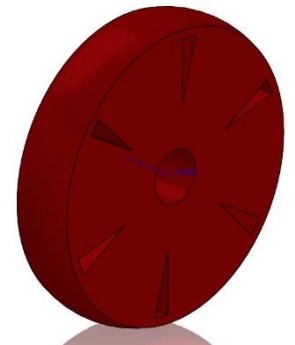
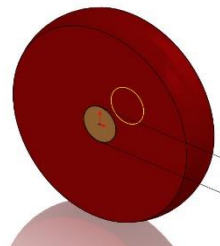
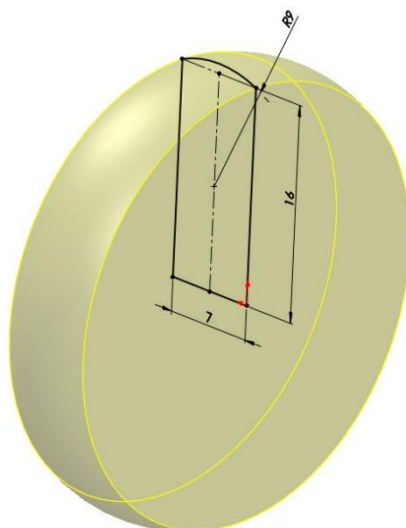


Wheel

Create a sketch to the dimensions below **Revolve**

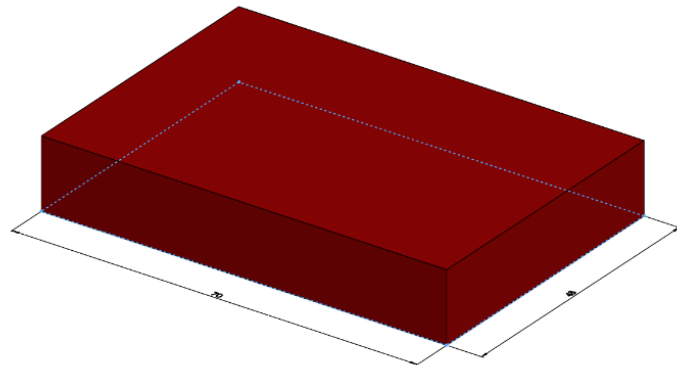
Sketch on the surface and **Extrude** through all

Use the **Pattern** command to create the triangles on the surface



Cabin Top

Sketch a rectangle 48mm by 70 mm and **Extrude** 20

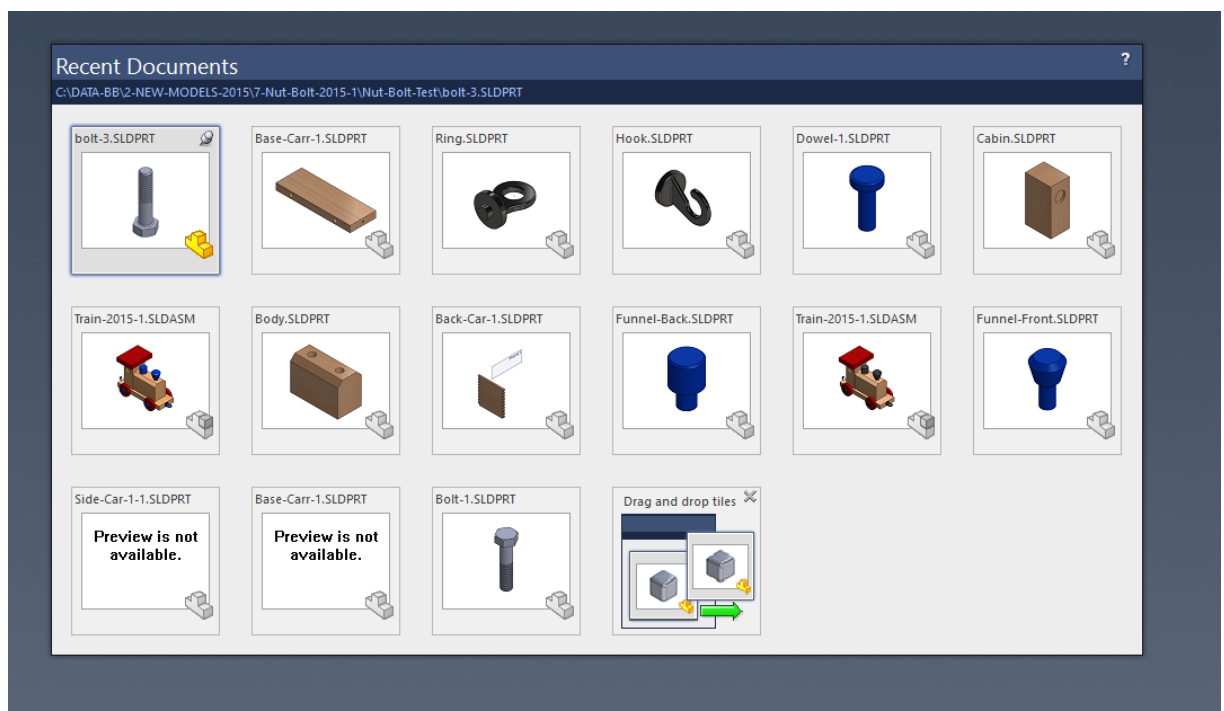


Inserting Part/Assembly

Method -1



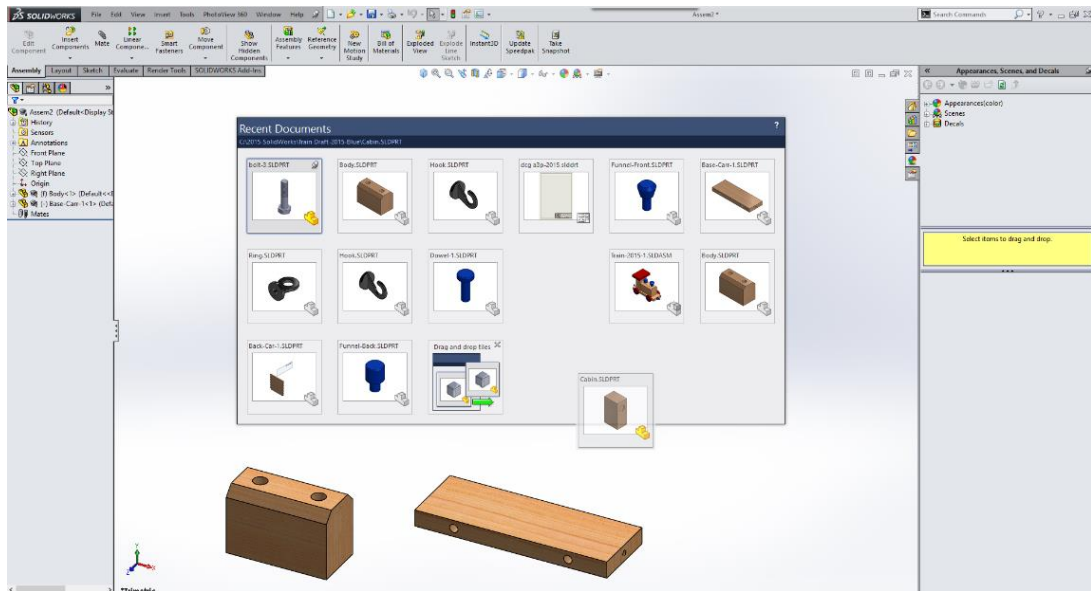
Select **New Assembly** and press the letter **R** the recent parts will appear. **Drag & Drop** the parts into the assembly.



Drag Drop



Select the part and **Drag & Drop** into the assembly



Train Assembled



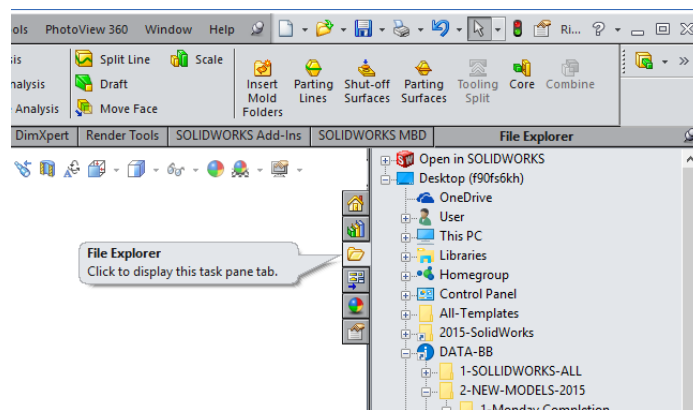
Inserting Part/Assembly

Method -2

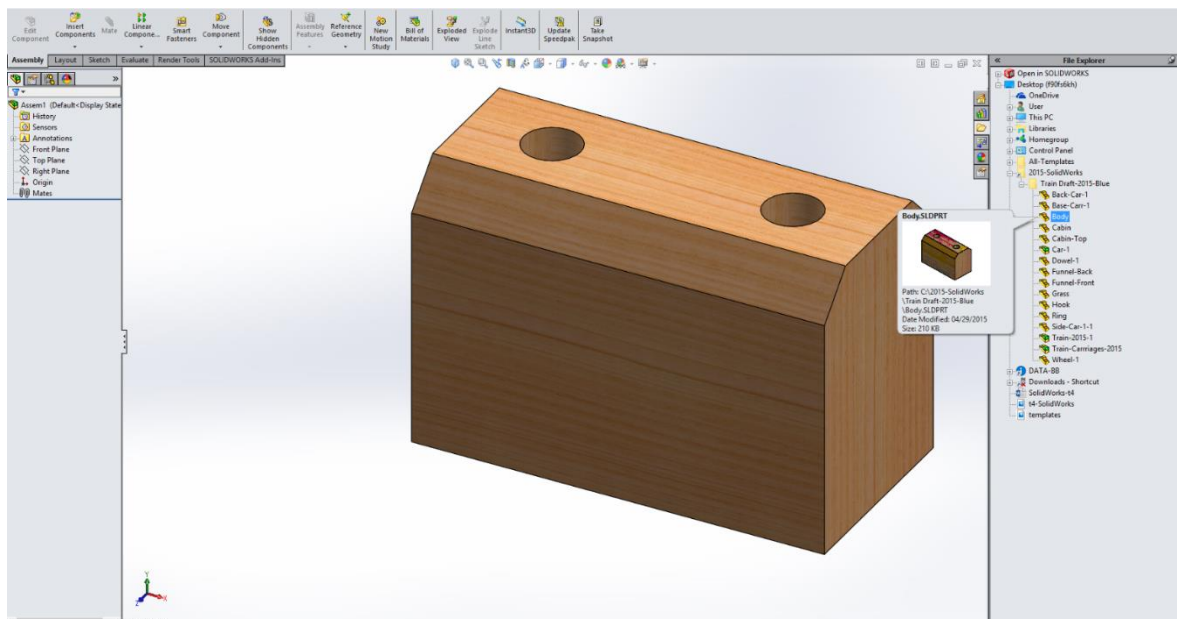


It is possible to Drag & Drop the parts into the assembly using the interface on the right hand side.

Select the **File Explorer** Option



Navigate to the folder required and select the file a preview will appear **Drag and Drop** the parts into the assembly.



Show and Hide Parts



Parts may be hidden in an assembly by using a combination of the **Mouse** and **Tab Key**.

Hide

Hold the **Tab Key** down and move the mouse over the parts to be hidden.

Show

Hold the **Tab Key** and the **Shift Key** down to show the part

Note: this command is very useful for demonstration purposes

