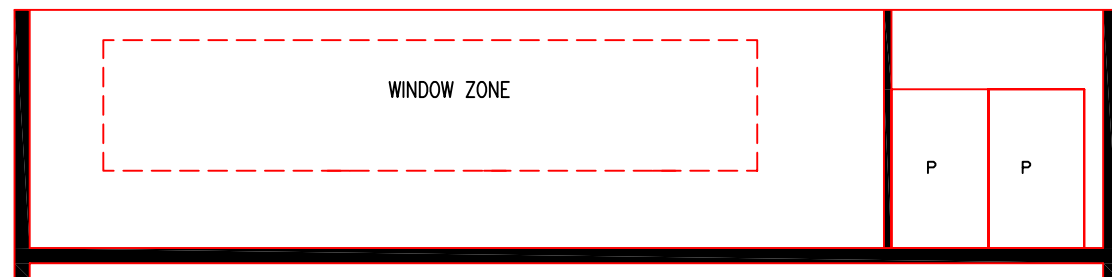
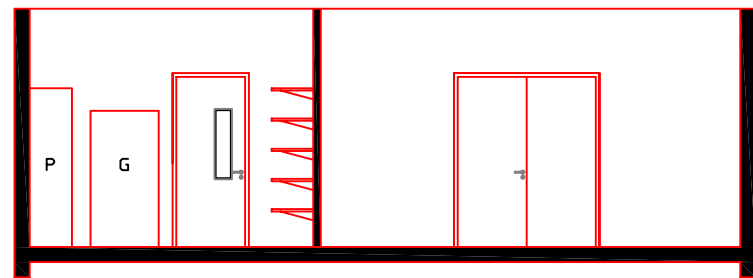


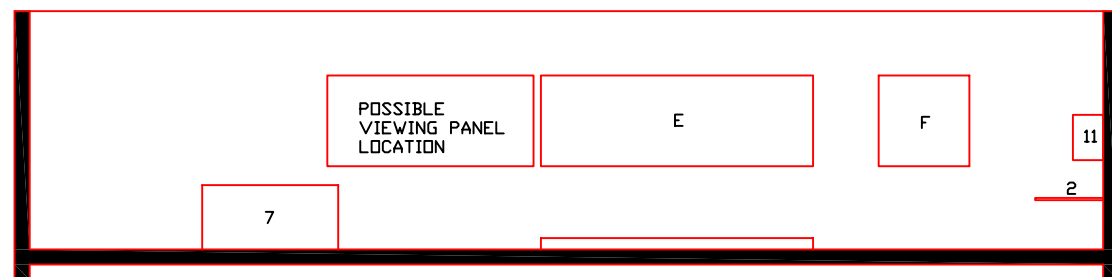
ELEVATION:A - A



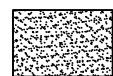
ELEVATION:B - B



ELEVATION:C - C



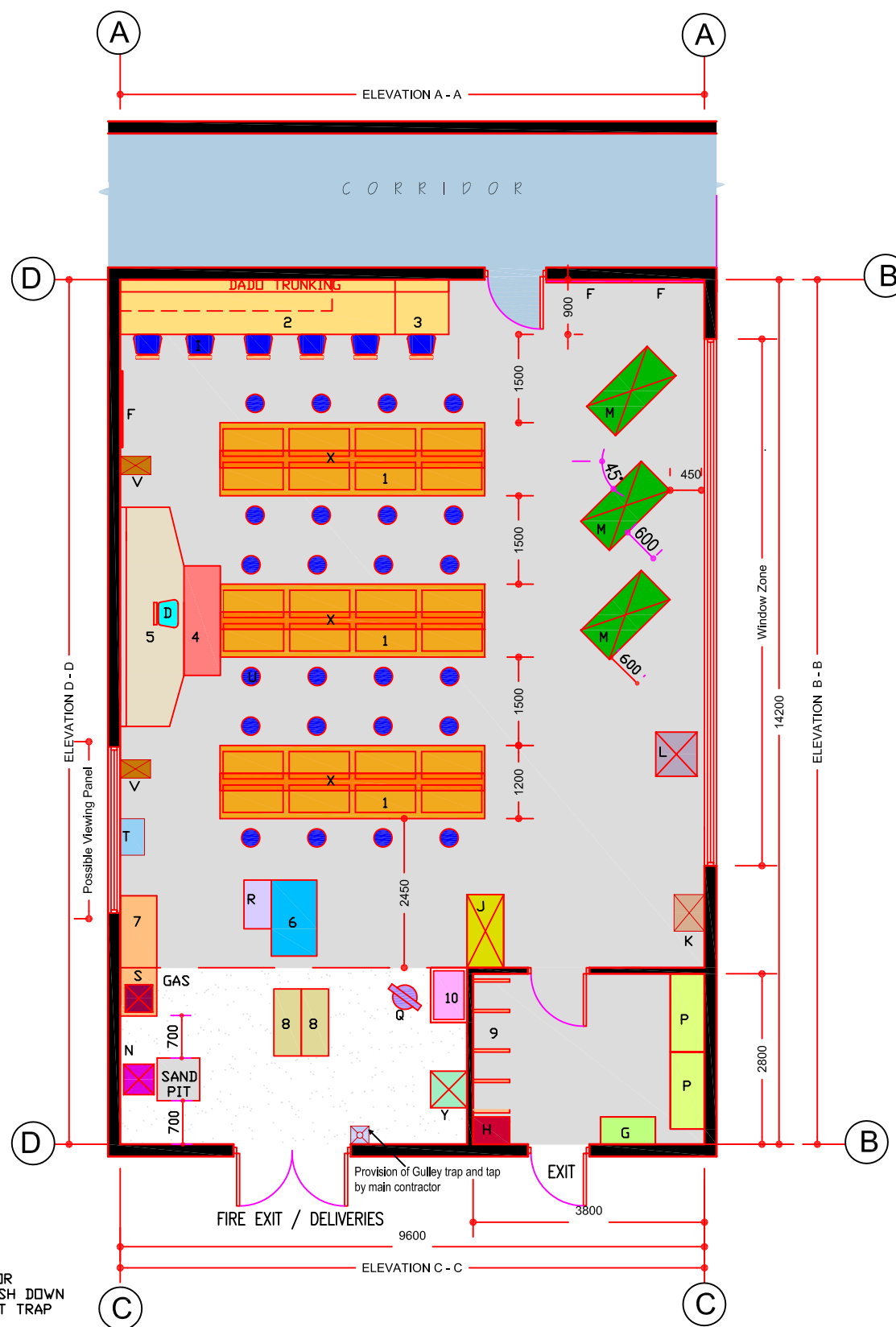
ELEVATION:D - D



GRANOLITHIC FLOOR FINISH WITH WASH DOWN GULLEY WITH SILT TRAP

Additional Notes:

- General floor to be 'Altro' or equal approved.
- Appropriate provision of loose furniture for SEN to be made, as required. Workstation assessment to be done by Occupational Therapist to determine furniture requirements.



PLAN : ENGINEERING / METALWORK ROOM & STORE

LEGEND

NOTES

- Please do not scale the drawing use figured dimensions.
- All dimensions given are in millimetres
- All room dimensions are "internal dimensions".
- Area is net internal area of the classroom.
- All room elevations are internal.
- Appropriate provision of loose furniture for SEN to be made, as required.

BUILDING SERVICES ENGINEERING SYMBOLS

	Plan	Elevation
Light Switches		
Twin switched socket outlets		
Telephone Point		
Public Address Speaker		
Dado trunking		
Network point		
Sub Distribution board (possible location)		
Three Phase power Supply		
Water supply (hot & cold)		
Water Heater		
Extract fan		
Electric emergency knockout point		
Key operated isolator		
Gas pressure proving system (with key switch)		
Gas emergency knockout point		
Radiator Zone		
Ceiling Mounted data Projector Point		
Cleaner's socket outlet (not controlled by isolator)		

BUILDING SERVICES NOTES :

- Layout should be read in conjunction with Technical Guidance Documents (TGD).
- Final position of the data and power outlets shall be above desk height (TGD).
- Dado trunking from above or ceiling void below if classroom located on first floor.

FIXED FURNITURE

	Quantity	Code
1 Student's workbench 4350x1200x800 high fixed to floor and fitted with 8 vices and with electrical socket outlets	03	MSB
2 Worktop 4500x900x680 high	---	CWT
3 Removable worktop 900x900x680 high	---	CWT
4 Teacher's desk 1800x600x900 high fixed to rostrum	01	MTD
5 Rostrum 3600x1700x150 high	01	R
6 Craft table (movable) 1250x750x850 high	01	CTM
7 Furnace / Soldering bench 1800x600x850 high	01	MFB
8 Welding bench (movable) 1100x450x850 high	02	---
9 Three tier wall brackets bolted to wall and spaced at 450 c/c	06	BIB
10 Belfast sink 900x460 H+C	01	BS
11 High level storage	31	HL6

LOOSE FURNITURE

	Quantity	Code
D Teacher's chair 525 high	01	SIE1
E Chalkboard 3600x1200 with sliding T-square	01	CTU
F Pinboard 1200x1200	03	PB
G Storage press 900x450x1800 high	01	SC1
H Four drawer filing cabinet 600x450 approx.	01	FC1
I Student computer chair height adjustable	06	SCC
J Horizontal band saw 3 phase or 1 phase	01	-
K Grinding machine 600x500 apx. with 750 clear space on either side	01	-
L Bandsaw 750x750 approx. 3 phase/1 phase	01	-
M Lathe 1400x675 approx.	03	-
N Welder	01	-
P Tool press 1200x560x2100 high	02	MW2
Q Anvil (movable) 600x400 approx.	01	-
R Shears (movable) 800x450 approx.	01	-
S Furnace 450x450 approx. sits on soldering bench	01	-
T Polishing machine 600x500 with 750 space either side	02	-
U Stackable student's stool 600 high	24	S2H
V Drilling machines 500x300 approx. with 750 clear space either side	02	-
W Exercise storage lockers 950x500x700 high to fit under workbenches	24	MUB
X Tool racks to fit on top of workbenches	06	LI
Y Brazing hearth 700x400 approx. canopy and extract over Gas and 3 phase electrical supply	01	-

POST-PRIMARY ROOM LAYOUTS

SCALE: 1:100

ENGINEERING METALWORK ROOM & STORE (136 m²)

DRG No: RT - 022

DATE: NOV '05

REVISION:

CHECKED BY : J.B

REMARKS:

PREPARED BY: R.R

DEPARTMENT OF EDUCATION & SCIENCE

An Roinn Oideachais agus Eolaíochta

PLANNING AND BUILDING UNIT

