



Coimisiún na Scrúduithe Stáit
State Examinations Commission

Leaving Certificate 2012

Marking Scheme

**ENGINEERING – MATERIALS AND
TECHNOLOGY**

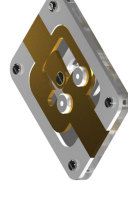
Common Level

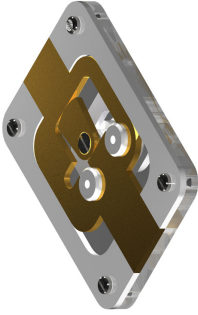
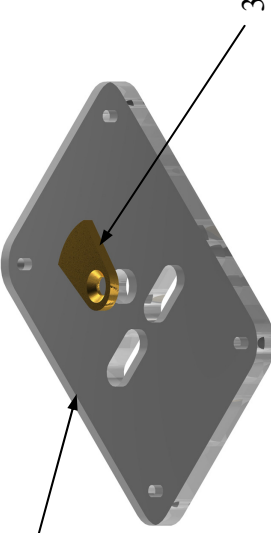

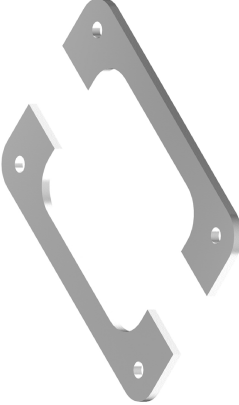
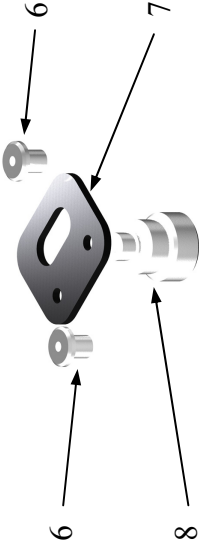
LEAVING CERTIFICATE 2012

MARKING SCHEME

Practical Examination

ENGINEERING – MATERIALS AND TECHNOLOGY



Subjective Marking 1 - 20		17 - 20 Excellent		13 - 16 Very Good		9 - 12 Good		5 - 8 Poor		1 - 4 Very Poor		
Section	Part Number	Pictorial Sketch / Description						Concept	Mark	Mark		
1	All Parts of Project							Assembly, Function & Finish Subjective Mark 1 – 20	20	20		
2	Parts 1 and 3							Part 1 12 Marks	Marking Out	2	20	
									10mm Radii	2		
									M5 Tapped Holes	2		
									Ø10 mm Hole	2		
									8 mm Slots	4		
						Part 3 8 Marks	Marking Out	2				
						Ø5.5 mm CSK	2					
						External Profile	4					
3	Part 2							Part 2	Marking Out	4	20	
									Internal Profile	6		
									57 × 60 mm with 12 mm Radii	4		
									34 × 26 mm Bolt End	3		
									21 × 26 mm Bolt End	3		
4	Parts 4 and 5							Parts 4 & 5	Marking Out	4	20	
									Ø5.5 mm Holes	4		
									10 mm Radii	4		
									12 mm Radii	4		
									Internal Profile	4		
5	Parts 6, 7 and 8							Part 6	Lathe Work	8	20	
									Part 7	Bench Work		8
									Part 8	Lathe Work		4

