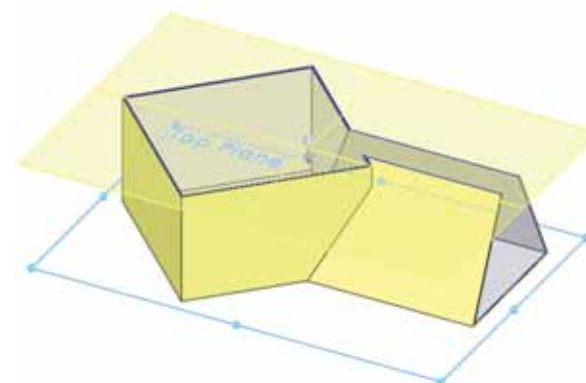
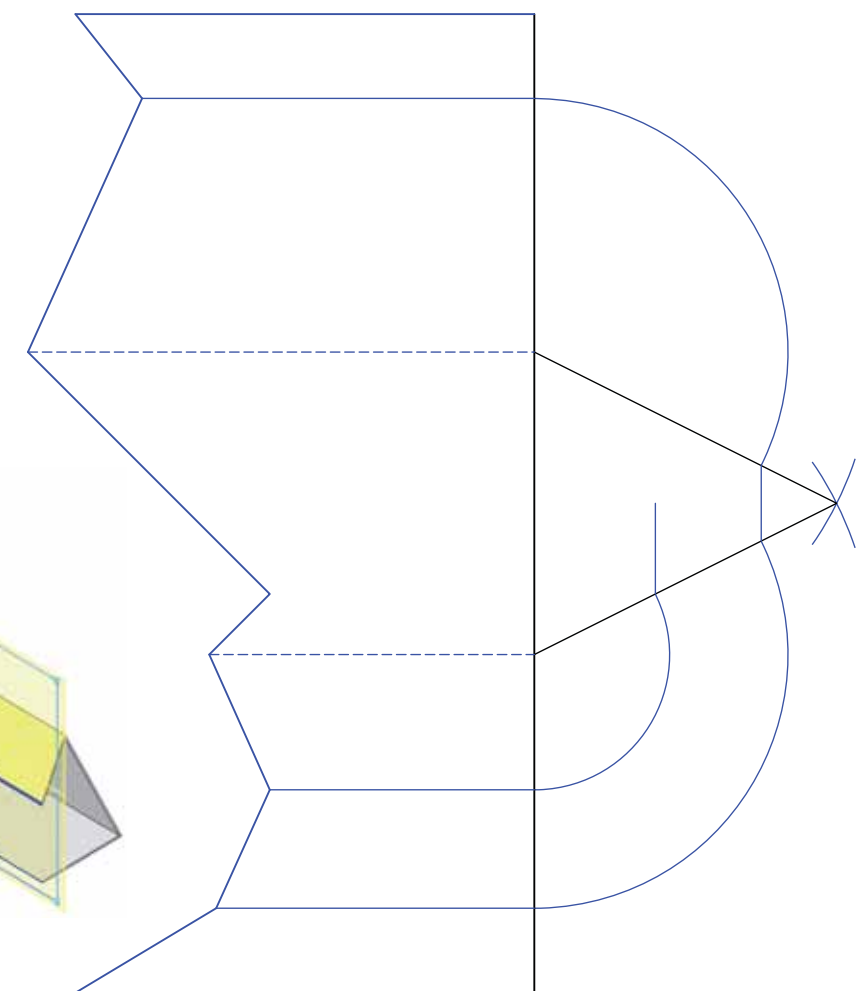
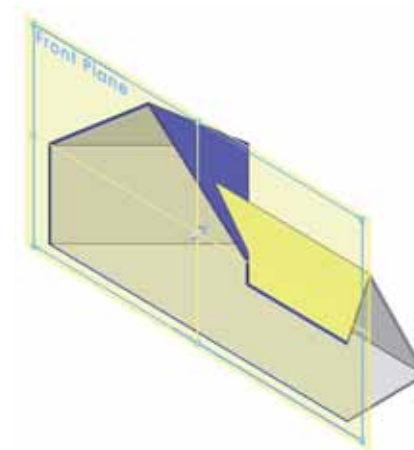
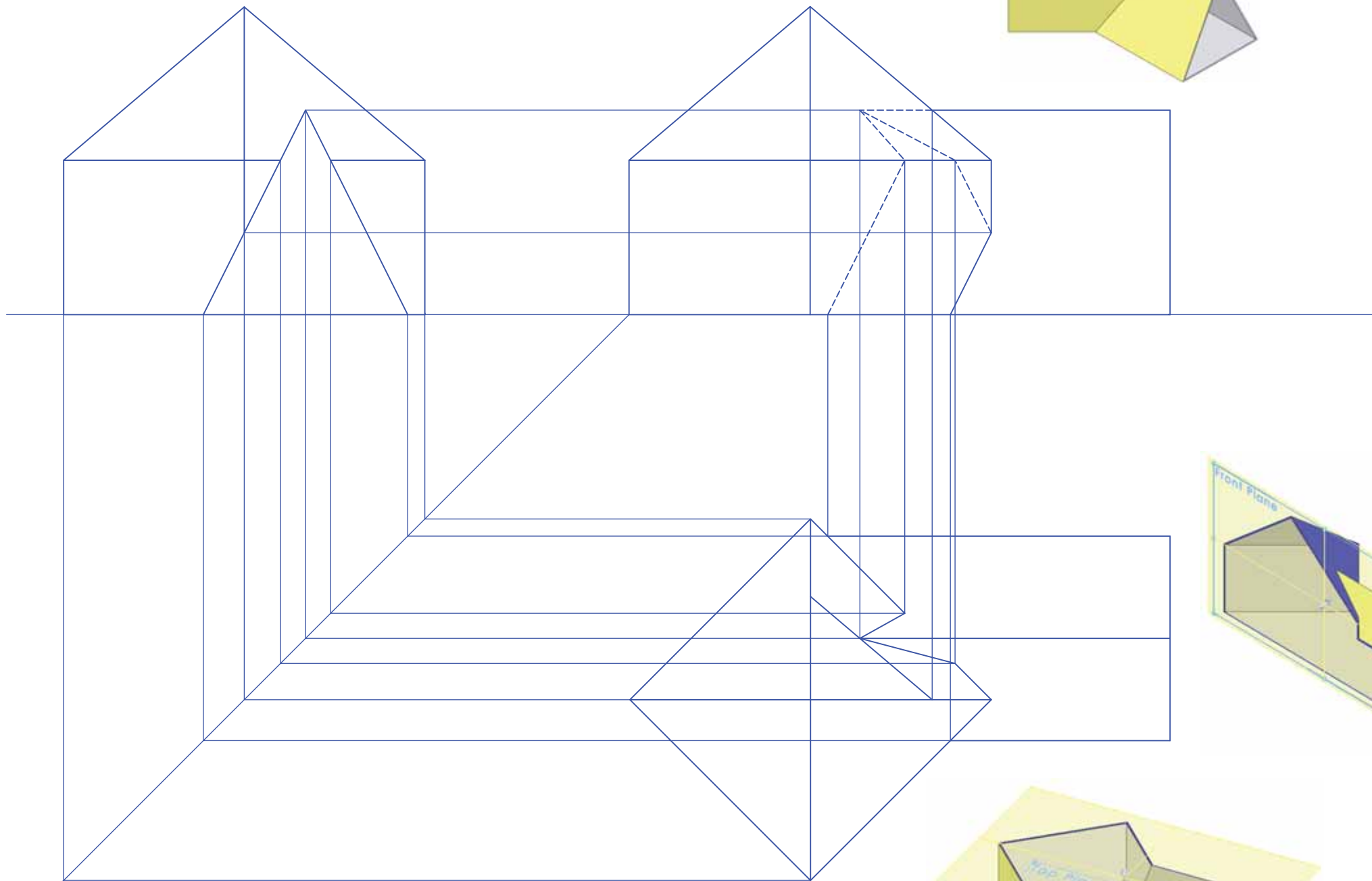
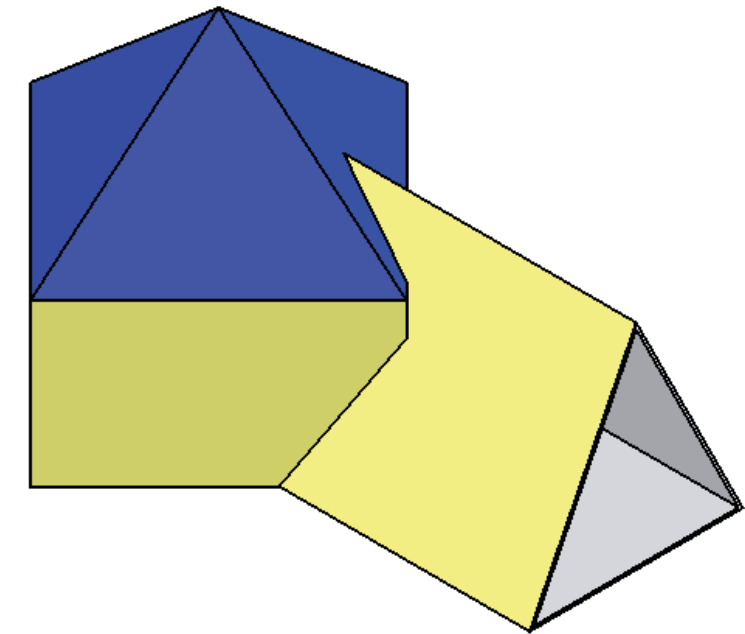
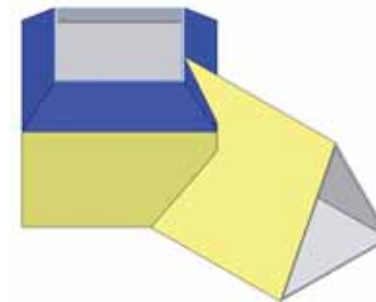


The drawing below shows the incomplete elevation, plan and end elevation of a building and its entrance. A pictorial view of the structure is also shown across.

The entrance hall is in the shape of a triangular prism.

- (a) Complete the given views showing all lines of interpenetration between the hall and the building.
- (b) Draw the complete surface development of the entrance hall.



TECHNOLOGY
SUBJECTS
SUPPORT
SERVICE

DESIGN & COMMUNICATION GRAPHICS

Intersection & Development of Surfaces

NAME: _____ DATE: _____